

THE BEST **SMT SOLUTION**

SMT Nozzles & Parts
Customized Nozzles
Cleaner & Etc



特殊ノズル

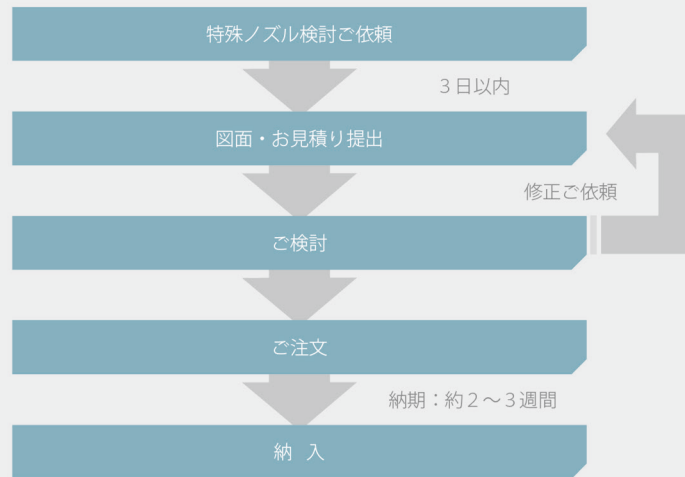
1. 特殊ノズル設計・製作の流れ

- ① 実装対象部品のデータ(部品データシートまたは部品現物サンプル)とご使用設備情報を送ってください。
- ② 頂いた情報を基にノズル設計図面(承認図)及びお見積書を提出致します。
- ③ ノズル形状検討後、仕様変更のご希望などがある場合は変更を行い、修正図面を提出、ご承認いただいた上、製作実施確認を致します。

※特徴

- A. 検討で依頼頂いてから図面・お見積り提出まで、原則3日以内。
(部品形状・ノズル形状によって提出が遅れる場合があります。提出が遅れる場合は事前にご連絡申し上げます)
- B. 納期はご注文頂いてから2～3週間。
(一般吸着ノズル：約2週間、グリッパー(メカチャック)ノズル：約3週間)

製作流れフロチャート



特殊ノズル 製作例

BMシリーズ



CM402(8h) | NPM(8h)



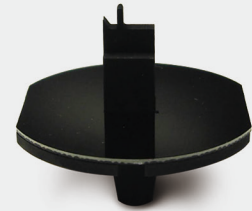
CM402異型 | DT401 MELF



DT401メカチャック



DT401コネクタ-側面吸着



MPAG3



MSR(HT-122)



YSシリーズ



XPシリーズ(FUJI)



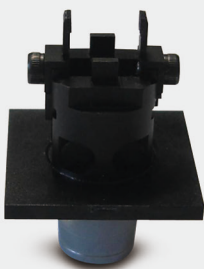
Mシリーズ(アイパルス)



YVシリーズ



GXHメカチャック(HITACHI)



KEシリーズ(JUKI)



I NEEDLE, HOLDER, SELECTIVE NOZZLE



GRIPPER

▮ BSE01 - odd form

▮ BSE02 - odd form

▮ BSE03 - odd form

▮ BSE04 - odd form



▮ BSE05 - odd form

▮ ETC

▮ GR NOZZLE





I NPM-16HEAD, CM602-12HEAD

PART No.	NAME	SPECIFICATION	MATERIAL	REMARK
N610017370AC	205CS	0.65×0.35	CERAMIC	0603
N610030510AC	206CS	0.5×0.6	CERAMIC	0603~1005
N610038265AA	256CSN(203ZSN)	0.45×0.3	CERAMIC	0402
101YCO-K0210	210CS	1.1×0.6	CERAMIC	1005
N610015533AA	218CS(209CS)	0.6×0.5	CERAMIC	1005
N610040786AA	225CSN	0.6×0.35(X)	CERAMIC	0603
N610119480AB	226CSN	0.5×0.6(X)	CERAMIC	0603~1005
N610119484AB	230CSN	1.0×0.7(X)	CERAMIC	1005~1608
N610119485AB	235CSN	1.6×0.8(王)	CERAMIC	1608~2125
N610119486AB	240CSN	φ2.4/φ1.8	CERAMIC	3216~4512
N610119444CB	110CSN	φ0.6/φ0.45	CERAMIC	1005
N610119444AB	110SN	φ0.6/φ0.45	METAL	1005
N610119450CB	115CSN	φ0.9/φ0.65	CERAMIC	1608
N610119450AB	115SN	φ0.9/φ0.65	METAL	1608
N610119456CA	120CSN	φ1.3/φ0.9	CERAMIC	2125
N610119456AA	120SN	φ1.3/φ0.9	METAL	2125
N610119461AA	130SN	φ2.4/φ1.8	METAL	3216
N610119473AA	140SN	φ4.0	RUBBER	IC
N610126849AA	161SN	φ1.3/φ0.9 MELF	METAL	MELF
N610088422AA	162SN	φ1.8/φ1.2 MELF	METAL	MELF
N610064717AA	185SN	φ6	RUBBER	



I NPM-8HEAD, CM402

PART No.	NAME	SPECIFICATION	MATERIAL	REMARK
N610000995AA	205A	0.65×0.35	CERAMIC	0603
N610015533AA	206A	0.5×0.6	CERAMIC	0603~1005
N610029201AA	256CN(203ZN)	0.45×0.3	CERAMIC	0402
101YCO-K0210	210A	1.1×0.6	CERAMIC	1005
N610015533AA	218(209)	0.6×0.5	CERAMIC	1005
N610040782AA	225CN	0.6×0.35(X)	CERAMIC	0603
N610119490AB	226CN	0.5×0.6(X)	CERAMIC	0603~1005
N610119493AB	230CN	1.0×0.7(X)	CERAMIC	1005~1608
N610119496AB	235CN	1.6×0.8(王)	CERAMIC	1608~3216
N610119499AB	240CN	φ2.4/φ1.8	CERAMIC	3216~4512
N610099372CA	110CN	φ0.6/φ0.45	CERAMIC	1005
N610099372AA	110N	φ0.6/φ0.45	METAL	1005
N610099373CA	115CN	φ0.9/φ0.65	CERAMIC	1608
N610099373AA	115N	φ0.9/φ0.65	METAL	1608
N610099374CA	120CN	φ1.3/φ0.9	CERAMIC	2125
N610099374AA	120N	φ1.3/φ0.9	METAL	2125
N610099375AA	130N	φ2.4/φ1.8	METAL	3216
N610099376AA	140N	φ4.0	RUBBER	IC
N610126847AA	161N	φ1.3/φ0.9 MELF	METAL	MELF
N610004674AA	162N	φ1.8/φ1.2 MELF	METAL	MELF
KXFX0387A00	450	φ6.0	RUBBER	SOP,QFP
KXFX03NGA00	460	φ10.0	RUBBER	Large Component
N610070338AB	185	φ6	RUBBER	
N610119407AA	199	φ10	RUBBER	

I NPM-2/3HEAD, DT401

PART No.	NAME	SPECIFICATION	MATERIAL	REMARK
KXFX05KVA00	1582N	0.65×0.35	CERAMIC	0603
N610098969AA	1001N	1.3×0.9	METAL/PLASTIC	1005
N610098969CA	1001CN	1.3×0.9	CERAMIC	1005
N610098970AA	1002N	3.0×2.2	METAL/PLASTIC	3216
N610098970CA	1002CN	3.0×2.2	CERAMIC	3216
N610098971AA	1003N	4.0 x 3.0	METAL	SOP, QFP
N610098972AA	1004N	Φ8.0	RUBBER	SOP, QFP
N610098973AA	1005N	Φ10.0	RUBBER	Large Component
N610114702AA	1006N	CALIBRATION		



I CM602/NPM16H (SPRING LOADED TYPE)

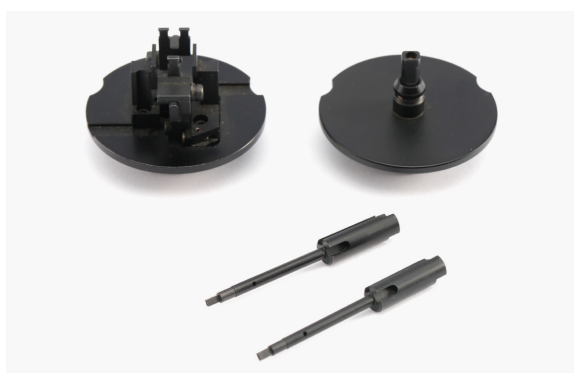
PART No.	NAME	SPECIFICATION	MATERIAL	REMARK
MTKU003834AA	281CS(N)	0.39×0.3/0.3×0.17	CERAMIC	0402R/C
MTKU003850AA	291CS(N)	0.6×0.35/0.4×0.27	CERAMIC	0603R/C
MTKU003851AA	275CS(N)	0.6×0.5/0.4×0.3	CERAMIC	0603R/C, 1005R/C
MTKU003852AA	286CS(N)	1.0×0.6/0.7×0.4	CERAMIC	1005R/C, 1608R/C



I AM100

PART No.	NAME	SPECIFICATION	MATERIAL	REMARK
	256M	0.45×0.3	CERAMIC	0402R/C
	225M	0.6×0.35(X)	CERAMIC	0603R/C
	226M	0.6×0.5(X)	CERAMIC	0603R/C, 1005R/C
	230M	1.0×0.7	CERAMIC	1005R/C, 1608R/C
	235M	1.6×0.8(王)	CERAMIC	1608R/C~3216R/C
	387M	1.6×1.1	CERAMIC	3216R/C, 4532R/C
	120MT	Φ1.3/Φ0.9	CERAMIC	2012R/C, 3216R/C
	240MT	Φ2.4/Φ1.8	CERAMIC	3216, 4532
	260M	Φ5.0/Φ3.0	METAL	TAN
	184MTR	Φ6.0/Φ4.0	METAL	SOP, QFP
	140M	Φ4.0	RUBBER	IC
	185M	Φ6.0	RUBBER	QFP, PLCC
	388M	Φ7.0	RUBBER	QFP, PLCC
	389M	Φ8.0	RUBBER	QFP, PLCC
	199MR	Φ10.0	RUBBER	Large Component





I MSR, HT-SERIES

PART No.	NAME	SPECIFICATION	MATERIAL	REMARK
10468S0002	VVS(NEW)	0.5×0.65	CERAMIC	OCTAGON
10468S0002	VVS(OLD)	0.5×0.6	CERAMIC	RECTANGLE
10468S0003	VS	0.6×1.0	CERAMIC	1005
10468S0004	S	1.0×1.6	CERAMIC	1608~2125
1046710134	M	Φ1.65/Φ1.2	CERAMIC	3216
10467S0001	L	Φ3.0/Φ2.5	METAL	4532,IC/M
10467S0002	LL	Φ5.5/Φ4.5	METAL	IC/M
10467S0003	LLL	Φ8.0	METAL	IC/L

I MV-SERIES

PART No.	NAME	SPECIFICATION	MATERIAL	REMARK
1042 7732 71XX	SX	0.45×0.6	CERAMIC	
1042 8751 51XX	SA(X)	0.8×1.0	CERAMIC	
1020 1750 15XX	RSS(SS)	1.0×1.4	CERAMIC	
1022 4784 86XX	MA	1.2×1.8	CERAMIC	
1020 1530 00XX	M	Φ1.2/Φ0.8	METAL/CERAMIC	
1020 1795 61XX	M	Φ1.6/Φ1.2	METAL/CERAMIC	
1020 1795 00XX	L	Φ3.0/Φ2.5	METAL	
1020 1750 11XX	LL	Φ5.5/Φ4.5	METAL	
1022 4790 22XX	LLL	Φ8.0	METAL	

I BM-SERIES, MSF

PART No.	NAME	SPECIFICATION	MATERIAL	REMARK
10862GH810AA	SX	0.4×0.6	CERAMIC	0603
10807GH811AG	SA	0.8×1.0	CERAMIC	1005
10807GH812AG	S	1.2×1.8	CERAMIC	1608~2125
10807GH813AF	M	3.4×4.0/Φ2.5	METAL	IC
10807GH814AF	ML	Φ6.0	RUBBER	SOP, QFP
10807GH815AF	LA	Φ10.0	RUBBER	SOP, QFP
10807GHJ813AL	MELF	Φ1.3	METAL	MELF
10807GH817AF	CN-S	1.5/7.0	METAL	CONNECTOR
10807GH818AF	CN-M	2.1/16.0	METAL	CONNECTOR
	CN-R1	5×12	METAL	CONNECTOR
	CN-R2	1.8×20	METAL	CONNECTOR
	CN-R3	4×25	METAL	CONNECTOR
10807GH820AF	CN-R4	5×9.4	METAL	CONNECTOR
10807GH821AF	CN-R5	0.8×9.6	METAL	CONNECTOR
10807GH822AF	CN-R6	5×16	METAL	CONNECTOR
	CN-R7	2.95×6.5	METAL	CONNECTOR
10807GH823AF	CN-R8	1.2×2.8	METAL	CONNECTOR
	CN-R10	2.4×13.4/2-HOLE	METAL	CONNECTOR
10807GH824AF	CN-R11	2.1×14/SIDE-HOLE	METAL	CONNECTOR
10807GH825AF	CN-R12	5×15	METAL	CONNECTOR

I MPAG3, MPAV2B

I MSH3

I MSH2, MSH-G1

CM88/KME

PART No.	NAME	SPECIFICATION	MATERIAL	REMARK
	0603	φ0.65/φ0.35	CERAMIC	0603
231C1111116 (W13VA)	1005	φ0.65/φ0.45	METAL	1005
1231C111165 (W13YA)	1608	φ0.9/φ0.6	METAL	1608
1231C111125 (W13XA)	2125	φ1.3/φ0.9	METAL	2012~2125
	2125 MELF	φ1.3/φ0.9	METAL	
1231C111145 (W13WA)	3216	φ1.8/φ1.4	METAL	3216
	3216 MELF	φ1.8/φ1.4	METAL	
1231C111153 (W13ZA)	IC/S	φ3.0/φ2.2	METAL	IC/S
	IC/L	φ4.0/φ1.5	METAL	IC/L



HDP DISPENSER

PART No.	NAME	SPECIFICATION	MATERIAL	REMARK
1021570400	VS	1D/1S φ0.7/φ0.4	METAL	1608
1021570562	S	2D/1S φ0.8/φ0.5 P=1.2	METAL	2125
1021570542	L	2D/1S φ1.0/φ0.7 P=3.0	METAL	3216
1021570552	L	2D/1S φ1.3/φ1.0 P=3.0	METAL	3216
1021570432	S	2D/2S φ0.7/φ0.4 P=0.8	METAL	1608
1021570412	S	2D/2S φ0.7/φ0.4 P=1.0	METAL	2125
1021570572	S	2D/2S φ0.8/φ0.5 P=1.3	METAL	2125
	L	2D/2S φ1.0/φ0.7 P=1.2	METAL	3216
104305972101	L	2D/2S φ1.1/φ0.8 P=2.0	METAL	IC/S
1021570422	L	4D/1S φ0.9/φ0.6 P=3.0	METAL	IC/L
102157040101	NOZZLE HOUSING		METAL	



HDF DISPENSER

PART No.	NAME	SPECIFICATION	MATERIAL	REMARK
10430 59 700	VS	1D/1S φ0.6/φ0.3	METAL	1608
10483 70 240	VS	2D/2S φ0.6/φ0.3 P=0.7	METAL	1608
10430 59 710	S	2D/2S φ0.7/φ0.4 P=1.0	METAL	2125
10483 70 420	S	2D/2S φ0.8/φ0.5 P=1.0	METAL	2125
10483 70 220	VS	2D/2S φ0.7/φ0.4 P=0.8	METAL	1608
10430 59 721	L	2D/2S φ1.1/φ0.8 P=2.0	METAL	IC/S
10430 59 720	L	4D/1S φ0.9/φ0.6 P=3.0	METAL	IC/L





I BD10S, BD12S-M DISPENSER

PART No.	NAME	SPECIFICATION	MATERIAL	REMARK
1020C0	S	2D/2S $\phi 0.7/\phi 0.4$ P=0.8	METAL	1608
1016C1	S	2D/2S $\phi 0.8/\phi 0.5$ P=0.9	METAL	2125
1017C1	M	2D/2S $\phi 1.0/\phi 0.7$ P=2.0	METAL	3216
	IC/S	2D/2S $\phi 1.3/\phi 1.0$ P=2.0	METAL	IC/S
1021C1	IC/L	4D/2S $\phi 1.3/\phi 1.0$ P=1.5	METAL	IC/L



I BD20S, BD30S-M DISPENSER

PART No.	NAME	SPECIFICATION	MATERIAL	REMARK
10HGCOM0000	10HGCO	1D/1S $\phi 0.7/\phi 0.4$	METAL	1608
10HJCOM0000	10HJCO	2D/2S $\phi 0.7/\phi 0.4$ P=0.8	METAL	1608
10HKCOM0000	10HKCO	2D/2S $\phi 0.8/\phi 0.5$ P=1.0	METAL	2125
10HLCOM0000	10HLCO	2D/2S $\phi 1.0/\phi 0.7$ P=1.2	METAL	3216
10HFCEM0000	10HFCE	2D/2S $\phi 1.2/\phi 0.9$ P=1.5	METAL	IC/S



I CM82C-ME SERIES

I CM82C-MG SERIES

I CM85C-MGU SERIES

I CM86C-M2 SERIES

I YSM40R

PART No.	NAME	SPECIFICATION	MATERIAL	REMARK
KMB-M7720-A0	7202A01	0.25*0.35(O)	CERAMIC	0402
KMB-M7730-A0	7203A01	0.3*0.7	CERAMIC	0603
KMB-M7740-A0	7204A01	0.5*1.5	CERAMIC	1005
KMB-M7750-A0	7205A01	0.9*1.7(X)	CERAMIC	1608
KMB-M7760-A0	7206A01	1.3*2(王)	CERAMIC	2125
KMB-M7770-A0	7207A01	2*3.2(I)	CERAMIC	3216
KMB-M7780-A0	7208A01	Φ4.0/3.0*2.0	METAL	I/C



I YSM40

PART No.	NAME	SPECIFICATION	MATERIAL	REMARK
KLF-M87A0-A07	500A/510A	0.25*0.35(O)	CERAMIC	0402
KLF-M8710-A0	511A	0.35*0.75(□)	CERAMIC	0603
KLF-M8720-A0	512A	1.2*0.45(□)	CERAMIC	1005
KLF-M8730-A1	513A	1.3*2.0(王)	CERAMIC	2012
KLF-M7710-A0	501A	0.8*0.7(X)	CERAMIC	1005
KLF-M7720-A0	502A	1.0*1.7(X)	CERAMIC	1608
KLF-M8740-A0	503A/514A	Φ4.0/3.0*2.0	METAL	
KLF-M8750-A0	504A/515A	Φ8.0	O-ring	
KLF-M8770-A00	506A/517A	3.0*2.0	METAL	MELF
KLF-M8780-A01	507A/518A	Φ9.0	O-ring	SOP,QFP



I YS12/YS12F/YS12P/YS24/MG-3/YSM20, YS100

PART No.	NAME	SPECIFICATION	MATERIAL	REMARK
KHY-M77A0-A0X	310A	0.25*0.35(O)	CERAMIC	0402
KHY-M7710-A0X	311A	0.35*0.75(□)	CERAMIC	0603
KHY-M7720-A0X	312A	1.2*0.45(□)	CERAMIC	1005
KHY-M7730-A0X	313A	1.3*2.0(王)	CERAMIC	2012
KHN-M7710-A1X	301A	0.8*0.7(X)	CERAMIC	1005
KHN-M7720-A1X	302A	1.0*1.7(X)	CERAMIC	1608
KHY-M7740-A0X	303A/314A	Φ4.0/3.0*2.0	METAL	IC
KHY-M7750-A0X	304A/315A	Φ8.0	O-ring	SOP,QFP
KHY-M7760-A0X	305A/316A	Φ15.0	O-ring	SOP,QFP
KHY-M7770-A0X	306A/317A	3.0*2.0	METAL	MELF
	309A	Φ1.2/Φ0.7	CERAMIC	1608





I YV100X/YV100X-F

PART No.	NAME	SPECIFICATION	MATERIAL	REMARK
	0603	0.35×0.65	CERAMIC	0603
KV8-M7710-A0X	71A	0.7×0.8(X)	CERAMIC	1005
KV8-M7720-A0X	72A	1.0×1.7(X)	CERAMIC	1608
KV8-M7730-A1X	73A	Φ4.0/3.0×2.0	METAL	IC
KV8-M7740-A1X	74A	Φ8.0	O-ring	SOP, QFP
KV8-M7760-A1X	76A	3.0×2.0	METAL	MELF
KV8-M77WL-A00	79A	Φ1.2/Φ0.7	CERAMIC	1608
KV8-M71N1-002	71F	0.7×0.8(X)	CERAMIC	1005
KV8-M71N2-A00	72F	1.0×1.7(X)	CERAMIC	1608
KV8-M71N3-A00	73F	Φ4.0/3.0×2.0	METAL	IC
KV8-M7WL-A00	79F	Φ1.2/Φ0.7	CERAMIC	1608



I YG100R/B, MG1-MG8

PART No.	NAME	SPECIFICATION	MATERIAL	REMARK
	0603	0.35×0.65	CERAMIC	0603
KGS-M7710-A1×	211A	0.7×0.8(X)	CERAMIC	1005
KGS-M7720-A1×	212A	1.0×1.7(X)	CERAMIC	1608
KGS-M7730-01×	213A	Φ4.0/3.0×2.0	METAL	IC
KGS-M7740-A1×	214A	Φ8.0	O-ring	IC
KGS-M7750-A1×	215A	Φ13.0	O-ring	IC
KGS-M7760-01×	216A	3.0×2.0	METAL	MELF
KGS-M7790-A1×	219	Φ1.2/Φ0.7	CERAMIC	1608
KV8-M71N1-002	211F(71F)	0.7×0.8(X)	CERAMIC	1005
KV8-M71N2-A00	212F(72F)	1.0×1.7(X)	CERAMIC	1608
KV8-M71N3-A00	213F(73F)	Φ4.0/3.0×2.0	METAL	IC
KV8-M7WL-A00	219F(79F)	Φ1.2/Φ0.7	CERAMIC	1608



I YG200/YG300

PART No.	NAME	SPECIFICATION	MATERIAL	REMARK
	0603	0.35×0.65	CERAMIC	0603
KGT-M7710-A0	201	0.7×0.8(X)	CERAMIC	1005
KGT-M7720-A0	202	1.0×1.7(X)	CERAMIC	1608
KGT-M7730-A0	203	Φ4.0/3.0×2.0	METAL	IC
KGT-M7760-A0	206	3.0×2.0	METAL	MELF
KGT-M7790-A0	209	Φ1.2/Φ0.7	CERAMIC	1608
KV8-M71N1-A0	201F(71F)	0.7×0.8(X)	CERAMIC	1005
KV8-M71N2-A0	202F(72F)	1.0×1.7(X)	CERAMIC	1608
KV8-M71N3-A0	203F(73F)	Φ4.0/3.0×2.0	METAL	IC
KV8-M71N9-A0	209F(79F)	Φ1.2/Φ0.7	CERAMIC	1608

I YV88XG, YV88XG-F

PART No.	NAME	SPECIFICATION	MATERIAL	REMARK
KV7-M7710-A1X	61A	0.7×0.8(X)	CERAMIC	1005
KV7-M7720-A1X	62A	1.0×1.7(X)	CERAMIC	1608
KV7-M7730-00X	63A	Φ4.0/3.0×2.0	METAL	IC/S
KV7-M7740-A0X	64A	Φ10.0	O-ring	I/C
KV7-M7750-A0X	65A	Φ15.0	O-ring	I/C
KV7-M7760-00X	66A	3.0×2.0	METAL	MELF
KV7-M71N1-A0X	61F	0.7×0.8(X)	CERAMIC	1005
KV7-M71N2-A0X	62F	1.0×1.7(X)	CERAMIC	1608
KV7-M71N3-A1X	63F	Φ4.0/3.0×2.0	METAL	IC
KV7-M71N4-A0X	69F	Φ1.2×Φ0.7	CERAMIC	1608



I YVL88, YV100II

PART No.	NAME	SPECIFICATION	MATERIAL	REMARK
KM0-M711A-31X	31A	1.0×1.2(X)	CERAMIC	1005
KM0-M711C-02X	32A	1.0×1.7(X)	CERAMIC	1608~2012
KM0-M711B-00X	32-1	Φ4.0/3.0×2.0	REFLECTOR	IC
KM0-M711C-02X	32-2	Φ4.0/3.0×2.0	METAL	IC
KM0-M711D-00X	33	Φ10.0	O-ring	SOP, QFP
KM0-M711E-00X	34	Φ15.0	O-ring	SOP, QFP
KG7-M71AB-A0X	35	3.0×2.0	METAL	MELF
KM0-M711J-A0X	39	Φ1.2/Φ0.7	CERAMIC	1608





I YM12D/YV64D/YV86D/YV100D DISPENSER

PART No.	NAME	SPECIFICATION	MATERIAL	REMARK
KM4-M7113-01X	2D/2S	$\phi 0.6/\phi 0.3$ P=0.7	METAL	
KG3-M7113-40X	2D/2S	$\phi 0.7/\phi 0.4$ P=0.8	METAL	
KM4-M7113-10X	2D/2S	$\phi 0.8/\phi 0.5$ P=1.0	METAL	
K37-M7113-40X	2D/2S	$\phi 0.9/\phi 0.6$ P=1.0	METAL	
K37-M7113-00X	2D/2S	$\phi 1.3/\phi 0.9$ P=2.0	METAL	
K37-M7113-20X	1D/1S	$\phi 0.8/\phi 0.5$ P=0.9	METAL	
KM4-M7113-20X	1D/2S	$\phi 0.6/\phi 0.3$ SP=2.2	METAL	
KM4-M7113-30X	1D/2S	$\phi 0.8/\phi 0.5$ SP=2.2	METAL	
KM4-M7113-40X	1D/2S	$\phi 1.8/\phi 1.4$ SP=4.0	METAL	
KM4-M7113-50X	1D/2S	$\phi 1.8/\phi 1.05$ SP=4.0	METAL	



I HSD DISPENSER

PART No.	NAME	SPECIFICATION	MATERIAL	REMARK
KV6-M7113-12X	111	2D/2S $\phi 0.7/\phi 0.4$ P=0.8	METAL	1608
KV6-M7113-23X	112	2D/2S $\phi 0.8/\phi 0.5$ P=1.3	METAL	2125
KV6-M7113-32X	113	2D/2S $\phi 1.2/\phi 0.9$ P=1.7	METAL	L
KV6-M7113-42X	114	1D/1S $\phi 0.7/\phi 0.4$	METAL	
KV6-M7113-52X	115	1D/1S $\phi 1.1/\phi 0.8$	METAL	
KV6-M7113-62X	116	1D/1S $\phi 1.8/\phi 1.5$	METAL	
KV6-M711A-00X	11A	2D/2S $\phi 0.7/\phi 0.4$ P=0.8	METAL	1608
KV6-M711B-00X	11B	1D/1S $\phi 1.3/\phi 1.0$	METAL	
KV6-M711C-00X	11C	1D/1S $\phi 1.6/\phi 1.3$	METAL	
KV6-M71LB-A0X	LBA	2D/1S 2- $\phi 0.4$ P=0.9	METAL	1608 A.P
KV6-M71LC-A0X	LCA	2D/1S 2- $\phi 0.4$ P=1.2	METAL	2012 A.P

I M6, M7, M10, M20

PART No.	NAME	SPECIFICATION	MATERIAL	REMARK
LC6-M7712-10	P031	0.5×0.4	CERAMIC	0603
LC6-M7714-00	P032	0.9×0.6	CERAMIC	1005
LC7-M7716-01	P033	φ1.3/φ0.7	CERAMIC	1608
LC6-M7718-00	P034	φ1.8/φ1.2	CERAMIC	2012~3216
LC6-M7724-00	P042	0.9×0.7	CERAMIC	1005
LC6-M7709-001	P005	φ3.0/φ2.0	METAL	IC
LC6-M770B-001	P006	φ4.5/φ3.5	METAL	IC
LC6-M770D-001	P012	φ2.0/φ1.0	METAL	MELF
LC6-M770F-001	P013	φ2.5/φ1.2	METAL	MELF
LC6-M770H-003	P017	φ4.0	RUBBER	IC
LC6-M770K-002	P018	φ6.0	RUBBER	SOP, QFP
LC6-M770M-002	P019	φ8.0	RUBBER	SOP, QFP
LC6-M770P-002	P020	φ10.0	RUBBER	SOP, QFP
LC6-M7727-000	P050	0.3×0.2/φ0.15	CERAMIC	0402
LC6-M7729-000	P051	0.7×0.3(□)	CERAMIC	0603, QFP
LC6-M7728-000	P052	1.2×0.5(X)	CERAMIC	1005
LC6-M772D-000	P053	2.0×1.3(X)	CERAMIC	2012
LC6-M7735-000	P054	φ1.8/φ1.2	CERAMIC	3216
LC6-M772K-000	P055	φ3.0/φ2.0	CERAMIC	IC
LC6-M772V-000	P056	φ4.5/φ3.5	METAL	IC
LC6-M7731-000	P057	φ6.0/φ5.0	METAL	IC
LC6-M772F-000	P061	0.7×0.7(X)	CERAMIC	
LC6-M772H-000	P062	1.7×0.9(X)	CERAMIC	
LC6-M773B-001	P072	φ2.0/φ1.0	METAL	MELF
LC6-M773E-001	P073	φ2.5/φ1.2	METAL	MELF



I M1, M4

PART No.	NAME	SPECIFICATION	MATERIAL	REMARK
LG0-M771G-00	M031	0.46×0.4	CERAMIC	0603
LG0-M771KG-00	M032	0.9×0.6	CERAMIC	1005
	M033	0.9×0.7	CERAMIC	
LG0-M7701-000	M001	0.46×0.4	CERAMIC	0603
LG0-M7703-000	M002	0.9×0.6	CERAMIC	1005
LG0-M7705-000	M003	φ1.3/φ0.7	CERAMIC	1608~2012
LG0-M7707-000	M004	φ1.8/φ1.2	CERAMIC	2012~3216
LG0-M7709-000	M005	φ3.0/φ2.0	METAL	IC
LG0-M770B-000	M006	φ4.5/φ3.5	METAL	IC
LG0-M770D-000	M012	φ2.0/φ1.0	METAL	MELF
LG0-M770F-000	M013	φ2.5/φ1.2	METAL	MELF
LG0-M770H-000	M017	φ4.0	RUBBER	IC
LG0-M770K-000	M018	φ6.0	RUBBER	SOP, QFP
LG0-M770M-000	M019	φ8.0	RUBBER	SOP, QFP
LG0-M770S-000	M020	φ10.0	RUBBER	SOP, QFP
	M021	0.9×0.7	CERAMIC	1005
	M022	0.9×1.0	CERAMIC	



I M2

PART No.	NAME	SPECIFICATION	MATERIAL	REMARK
LC1-M7712-00	N031	0.46×0.4	CERAMIC	0603
LC1-M7714-00	N032	0.9×0.6	CERAMIC	1005
LC6-M7716-00	N033	0.9×0.7	CERAMIC	
LC1-M7701-00	N001	0.46×0.4	CERAMIC	0603
LC1-M7703-00	N002	0.9×0.6	CERAMIC	1005
LC1-M7705-00	N003	φ1.3/φ0.7	CERAMIC	1608~2012
LC1-M7707-00	N004	φ1.8/φ1.2	CERAMIC	2012~3216
LC1-M7709-00	N005	φ3.0/φ2.0	METAL	IC
LC1-M770B-00	N006	φ4.5/φ3.5	METAL	IC
LC1-M770D-00	N012	φ2.0/φ1.0	METAL	MELF
LC1-M770F-00	N013	φ2.5/φ1.2	METAL	MELF
LC1-M770H-00	N017	φ4.0	RUBBER	IC
LC1-M770K-00	N018	φ6.0	RUBBER	SOP, QFP
LC1-M770M-00	N019	φ8.0	RUBBER	SOP, QFP
LC1-M770P-00	N020	φ10.0	RUBBER	SOP, QFP
LC1-M770S-00	N021	0.9×0.7	CERAMIC	1005
LC1-M770U-00	N022	0.9×1.0	CERAMIC	





I Σ-G4, Σ-G5 (High speed)

PART No.	NAME	SPECIFICATION	MATERIAL	REMARK
HG21C---	HG21C/HG22C/HG23C	0.5×0.3	CERAMIC	0402
HG32C---	HG31C/HG32C/HG33C	0.7×0.4	CERAMIC	0603
HV32C---	HV31C/HV32C/HV33C	0.7×0.4	CERAMIC	0603
HG52C---	HG51C/HG52C/HG53C	1.1×0.6	CERAMIC	1005
HV51C---	HV51C/HV52C/HV53C	1.1×0.6	CERAMIC	1005
HG82C---	HG81C/HG82C/HG83C	1.7×0.9	CERAMIC	1608
HV82C---	HV81C/HV82C/HV83C	1.7×0.9	CERAMIC	1608
HV13C---	HV13C/HV03C	Φ1.3/Φ0.9	CERAMIC	2012
HV14C---	HV14C/HA04C	Φ1.8/Φ1.1	CERAMIC	3216
HV15C---	HV15C/HA05C	Φ3.0/Φ2.0	METAL	4253
HV19C---	HV19C/HA09C	Φ6.0/Φ4.5	METAL	SOP
HB03C---	HB03C	Φ1.3/Φ0.9	METAL	2012~3216 MELF
HB04C---	HB04C	Φ1.8/Φ1.1	METAL	3216~5922 MELF



I GXH-1, GXH-3 (High speed)

PART No.	NAME	SPECIFICATION	MATERIAL	REMARK
630 137 5472	HA11	0.5×0.3	CERAMIC	0402
630 152 8267	HV31/HV32/HV33	0.7×0.4	CERAMIC	0603
630 158 6571	HG31/HG32/HG33	0.7×0.4	CERAMIC	0603
630 128 4842	HA10	0.7×0.4	CERAMIC	0603
630 152 8472	HV51/HV52/HV53	1.1×0.6	CERAMIC	1005
630 159 9632	HG51/HG52/HG53	1.1×0.6	CERAMIC	1005
630 129 2878	HV01	Φ0.6/Φ0.4	CERAMIC	1005
630 132 2322	PV01	1.1×0.6	CERAMIC	1005
630 158 9084	HV81/HV82/HV83	1.7×0.9	CERAMIC	1608
630 161 3501	HG81/HG82/HG83	1.7×0.9	CERAMIC	1608
630 129 2885	HV02	Φ0.9/Φ0.7	CERAMIC	1608
630 132 9857	PV02	1.7×0.9	CERAMIC	1608
630 129 2892	HV03	Φ1.3/Φ0.9	CERAMIC	2012~2125
630 129 2922	HV04	Φ1.8/Φ1.1	CERAMIC	3216
	HV05	Φ3.0/Φ2.0	METAL	4523
	HV09	Φ6.0/Φ4.5	METAL	SOP
630 129 2908	HB03	Φ1.3/Φ0.9	METAL	2012 MELF
630 129 2922	HA04	Φ1.8/Φ1.1	METAL	3216
630 129 2915	HB04	Φ1.8/Φ1.1	METAL	3216 MELF



I MULTI SPEED

NAME	NAME	NAME	NAME	NAME
RA04	VE11	VF02	VG51	VS03
RA05	VE35	VF05	VG52	VS05
RA06	VE41	VF06		VT32
RV01	VF01	VF07		VT14
RV06		VG02		VT16
RV07		VG25		FA04
VC02		VG35		FA05
VC14		VG45		FA06
VC16				FF01
				FF02



I NXT-III (24HEAD)

PART No.	NAME	SPECIFICATION	MATERIAL	REMARK
2AGKNX005103	Φ0.2	Φ0.2	CERAMIC	0201
2AGKNX005203	Φ0.3	Φ0.3	CERAMIC	0402
2AGKNX005303	Φ0.4	Φ0.4	CERAMIC	0603
2AGKNX005502	Φ0.5	Φ0.5	CERAMIC	0603~1005
2AGKNX003106	Φ0.7	Φ0.7	CERAMIC	1005
	Φ0.8	Φ0.8	CERAMIC	1005~1608
2AGKNX003504	Φ1.0	Φ1.0	CERAMIC	1608
2AGKNX001703	Φ1.3	Φ1.3	CERAMIC	2012
2AGKNX004004	Φ1.3M	Φ1.3 MELF	CERAMIC	MELF
2AGKNX003703	Φ1.8	Φ1.8	CERAMIC	3216
2AGKNX004104	Φ1.8M	Φ1.8 MELF	CERAMIC	MELF
2AGKNX003903	Φ2.5	Φ2.5	CERAMIC	IC/S
2AGKNX007501	WRS	S	CERAMIC	WIDE-S TYPE
2AGKNX007602	WRM	M	CERAMIC	WIDE-M TYPE
2AGKNX007703	WRL	L	CERAMIC	WIDE-L TYPE



I NXT-H08, H12

PART No.	NAME	SPECIFICATION	MATERIAL	REMARK
AA1AT00	Φ0.3	Φ0.4/Φ0.25	CERAMIC	
AA05600	Φ0.4	0.4×0.3	CERAMIC	
	Φ0.5	Φ0.55/0.35×0.25	CERAMIC	
	Φ0.5C	0.55×0.45	CERAMIC	
AA05700	Φ0.7	Φ0.7/Φ0.38	CERAMIC	
AA05800	Φ1.0	Φ1.0/Φ0.7	CERAMIC	
AA20A00	Φ1.3	Φ1.3/Φ1.0	CERAMIC	
AA20B00	Φ1.8	Φ1.8	CERAMIC	
AA20C01	Φ2.5	Φ2.5	CERAMIC	
AA0WT00	Φ2.5G	Φ2.5	RUBBER	
AA20D00	Φ3.7	Φ3.7	CERAMIC	
AA18C00	Φ3.7G	Φ3.7	RUBBER	
AA20E00	Φ5.0	Φ5.0	CERAMIC	
AA06300	Φ5.0G	Φ5.0	RUBBER	
2AGKNG021601	WRS	S	CERAMIC	WIDE-S TYPE
2AGKNG021701	WRM	M	CERAMIC	WIDE-M TYPE
2AGKNG021804	WRL	L	CERAMIC	WIDE-L TYPE



I NXT-H01, H02

PART No.	NAME	SPECIFICATION	MATERIAL	REMARK
AA0AS00	Φ1.0	Φ1.0/Φ0.7	CERAMIC	
AA06800	Φ1.3	Φ1.3/Φ1.0	CERAMIC	
AA0HL00	Φ1.8	Φ1.8	CERAMIC	
AA0HM00	Φ2.5	Φ2.5	CERAMIC	
AA08410	Φ2.5G	Φ2.5	RUBBER	
AA0HN00	Φ3.7	Φ3.7	CERAMIC	
AA08500	Φ3.7G	Φ3.7	RUBBER	
AA0HR01	Φ5.0	Φ5.0	CERAMIC	
AA07200	Φ5.0G	Φ5.0	RUBBER	
AA08000	Φ7.0	Φ7.0	METAL	
AA07310	Φ7.0G	Φ7.0	RUBBER	
AA08100	Φ10.0	Φ10.0	METAL	
AA07410	Φ10.0G	Φ10.0	RUBBER	
AA08200	Φ15.0	Φ15.0	METAL	
AA07510	Φ15.0G	Φ15.0	RUBBER	
AA08300	Φ20.0	Φ20.0	METAL	
AA07610	Φ20.0G	Φ20.0	RUBBER	

I NXT-H04

PART No.	NAME	SPECIFICATION	MATERIAL	REMARK
AA06W00	Φ1.0	Φ1.0/Φ0.7	CERAMIC	
AA06X00	Φ1.3	Φ1.3/Φ1.0	CERAMIC	
AA06Y00	Φ1.8	Φ1.8	CERAMIC	
AA06Z00	Φ2.5	Φ2.5	CERAMIC	
AA07F00	Φ2.5G	Φ2.5	RUBBER	
AA07A00	Φ3.7	Φ3.7	CERAMIC	
AA00G00	Φ3.7G	Φ3.7	RUBBER	
AA07B00	Φ5.0	Φ5.0	CERAMIC	
AA00H00	Φ5.0G	Φ5.0	RUBBER	
AA07C00	Φ7.0	Φ7.0	METAL	
AA07K00	Φ7.0G	Φ7.0	RUBBER	
AA07D00	Φ10.0	Φ10.0	METAL	
AA07L00	Φ10.0G	Φ10.0	RUBBER	



I NXT-H04S

PART No.	NAME	SPECIFICATION	MATERIAL	REMARK
	Φ1.0	Φ1.0/Φ0.7	CERAMIC	
AA8TE00	Φ1.3	Φ1.3/Φ1.0	CERAMIC	
AA8WW00	Φ1.8	Φ1.8	CERAMIC	
AA8WX00	Φ2.5	Φ2.5	CERAMIC	
AA8XA00	Φ2.5G	Φ2.5	RUBBER	
AA93W00	Φ3.7	Φ3.7	CERAMIC	
AA8XB00	Φ3.7G	Φ3.7	RUBBER	
AA93X00	Φ5.0	Φ5.0	CERAMIC	
AA8XC00	Φ5.0G	Φ5.0	RUBBER	
AA93Y00	Φ7.0	Φ7.0	METAL	
AA8XD00	Φ7.0G	Φ7.0	RUBBER	
	Φ10.0	Φ10.0	METAL	
	Φ10.0G	Φ10.0	RUBBER	



I NXT AIM-H08M

PART No.	NAME	SPECIFICATION	MATERIAL	REMARK
AA8DX00	Φ0.7	Φ0.7/Φ0.4	CERAMIC	
AA8LT00	Φ1.0	Φ1.0/Φ0.7	CERAMIC	
AA8DY00	Φ1.3	Φ1.3/Φ1.0	CERAMIC	
AA8LW00	Φ1.8	Φ1.8	CERAMIC	
AA8LX00	Φ2.5	Φ2.5	CERAMIC	
AA8ME00	Φ2.5G	Φ2.5	RUBBER	
AA8LY00	Φ3.7	Φ3.7	CERAMIC	
AA8MF00	Φ3.7G	Φ3.7	RUBBER	
AA8LZ00	Φ5.0	Φ5.0	CERAMIC	
AA8MG00	Φ5.0G	Φ5.0	RUBBER	
AA8MA00	Φ7.0	Φ7.0	METAL	
AA8MH00	Φ7.0G	Φ7.0	RUBBER	
AA8MB00	Φ10.0	Φ10.0	METAL	
AA8MK00	Φ10.0G	Φ10.0	RUBBER	





NXT R4

PART No.	NAME	MATERIAL	REMARK
2AGKNM0002(R19-010-095)	Φ1.0	CERAMIC	YA3
2AGKNM0003(R19-013-095)	Φ1.3	CERAMIC	YA4
2AGKNM0004(R19-018-095)	Φ1.8	CERAMIC	YA5
2AGKNM0005(R19-025-095)	Φ2.5	CERAMIC	YA6
2AGKNM0006(R19-037-095)	Φ3.7	CERAMIC	YA7
2AGKNM0007(R19-050-095)	Φ5.0	CERAMIC	YA8
2AGKNM0008(R19-070-095)	Φ7.0	METAL	YA9
2AGKNM0009(R19-100-095)	Φ10.0	METAL	YB0
2AGKNM0017(R19-013M-095)	Φ1.3M	CERAMIC	YH4
2AGKNM0018(R19-018M-095)	Φ1.8M	CERAMIC	YH5
2AGKNM0019(R19-025M-095)	Φ2.5M	CERAMIC	YH6
2AGKNM0011(R19-025G-095)	Φ2.5G	RUBBER	YE6
2AGKNM0012(R19-037G-095)	Φ3.7G	RUBBER	YE7
2AGKNM0013(R19-050G-095)	Φ5.0G	RUBBER	YE8
2AGKNM0014(R19-070G-095)	Φ7.0G	RUBBER	YE9
2AGKNM0015(R19-100G-095)	Φ10.0G	RUBBER	YF0

NXT G04

PART No.	NAME	MATERIAL	REMARK
AA6CX(R24-003-135-G)	Φ0.3	CERAMIC	W10
AA6CY(R24-004-135-G)	Φ0.4	CERAMIC	W11
AA6NM(R24-007-135-G)	Φ0.7	CERAMIC	W12
AA6DA(R24-010-135-G)	Φ1.0	CERAMIC	W13
AA6TW(R24-013-135-G)	Φ1.3	CERAMIC	W14
AA6DC(R24-018-135-G)	Φ1.8	CERAMIC	W15
AA6DD(R24-025-135-G)	Φ2.5	CERAMIC	W16
AA6DE(R24-037-135-G)	Φ3.7	CERAMIC	W17
AA6TD(R24-050-135-G)	Φ5.0	CERAMIC	W18
AA6TM(R24-070-135-G)	Φ7.0	METAL	W19
AA6TE(R24-100-135-G)	Φ10.0	METAL	W20
AA6DK(R24-025G-135-G)	Φ2.5G	RUBBER	W56
AA6DL(R24-037G-135-G)	Φ3.7G	RUBBER	W57
AA6DM(R24-050G-135-G)	Φ5.0G	RUBBER	W58
AA6DN(R24-070G-135-G)	Φ7.0G	RUBBER	W59
AA6DR(R24-100G-135-G)	Φ10.0G	RUBBER	W60

NXT-OF

PART No.	NAME	SPECIFICATION	MATERIAL	REMARK
AA1CB16(R26-010-280)	Φ1.0	Φ1.0	CERAMIC	E13
AA1CC15(R26-013-280)	Φ1.3	Φ1.3	CERAMIC	E14
AA1CD15(R26-018-280)	Φ1.8	Φ1.8	CERAMIC	E15
AA1CE16(R26-025-280)	Φ2.5	Φ2.5	CERAMIC	E16
AA1CN08(R26-025G-280)	Φ2.5G	Φ2.5	RUBBER	
AA1CF15(R26-037-280)	Φ3.75	Φ3.75	CERAMIC	E17
AA1CR13(R26-037G-280)	Φ3.75G	Φ3.75	RUBBER	
AA1CG15(R26-050-280)	Φ5.0	Φ5.0	CERAMIC	E18
AA1CS16(R26-050G-280)	Φ5.0G	Φ5.0	RUBBER	
AA1CH15(R26-070-280)	Φ7.0	Φ7.0	METAL	E19
AA1CT13(R26-070G-280)	Φ7.0G	Φ7.0	RUBBER	
AA1CK15(R26-100-280)	Φ10.0	Φ10.0	METAL	E20
AA1CW12(R26-100G-280)	Φ10.0G	Φ10.0	RUBBER	
AA1CL13(R26-150-280)	Φ15.0	Φ15.0	METAL	E21
AA1CX07(R26-150G-280)	Φ15.0G	Φ15.0	RUBBER	
AA1CM10(R26-200-280)	Φ20.0	Φ20.0	METAL	E22
AA1CY07(R26-200G-280)	Φ20.0G	Φ20.0	RUBBER	

NXT-DX

PART No.	NAME	SPECIFICATION	MATERIAL	REMARK
2AGKNL017303(R28-010-365-F)	Φ1.0	Φ1.0	CERAMIC	LM3
2AGKNL013905(R28-013-365-F)	Φ1.3	Φ1.3	CERAMIC	LM4
2AGKNL018702(R28-013M-365-F)	Φ1.3M	Φ1.3MELF	CERAMIC	LS4
2AGKNL017403(R28-018-365-F)	Φ1.8	Φ1.8	CERAMIC	LM5
2AGKNL018802(R28-018M-365-F)	Φ1.8M	Φ1.8MELF	CERAMIC	LS5
2AGKNL014005(R28-025-365-F)	Φ2.5	Φ2.5	CERAMIC	LM6
2AGKNL018003(R28-025G-365-F)	Φ2.5G	Φ2.5	RUBBER	LP6
2AGKNL018902(R28-025M-365-F)	Φ2.5M	Φ2.5MELF	CERAMIC	LS6
2AGKNL017503(R28-037-365-F)	Φ3.75	Φ3.75	CERAMIC	LM7
2AGKNL018102(R28-037G-365-F)	Φ3.75G	Φ3.75	RUBBER	LP7
2AGKNL014105(R28-050-365-F)	Φ5.0	Φ5.0	CERAMIC	LM8
2AGKNL018202(R28-050G-365-F)	Φ5.0G	Φ5.0	RUBBER	LP8
2AGKNL017603(R28-070-365-F)	Φ7.0	Φ7.0	METAL	LM9
2AGKNL018302(R28-070G-365-F)	Φ7.0G	Φ7.0	RUBBER	LP9
2AGKNL017703(R28-100-365-F)	Φ10.0	Φ10.0	METAL	LN0
2AGKNL018402(R28-100G-365-F)	Φ10.0G	Φ10.0	RUBBER	LP0
2AGKNL017803(R28-150-365-F)	Φ15.0	Φ15.0	METAL	LN1
2AGKNL018502(R28-150G-365-F)	Φ15.0G	Φ15.0	RUBBER	LR1
2AGKNL017903(R28-200-365-F)	Φ20.0	Φ20.0	METAL	LN2
2AGKNL018602(R28-200G-365-F)	Φ20.0G	Φ20.0	RUBBER	LR2

PANASONIC

YAMAHA

I-PULSE

HITACHI

FUJI

JUKI

PANASONIC

SONY

CASIO

SANYO

ASSEMBLEON

ASM

HANWHA (SAMSIUNG)

I CP7, CP8

PART No.	NAME	SPECIFICATION	MATERIAL	REMARK
R08-004	φ0.4 Straight Pipe	8mm Disk	METAL	
R08-004	φ0.4 Taper Pipe	8mm Disk	CORONA	
ADCPH-9510	φ0.4	8mm Disk	METAL	TAPER SPECIAL METAL
ADCPH-9520	φ0.7	8mm Disk	METAL	
ADCPH-9530	φ1.0	8mm Disk	METAL	
ADCPH-9540	φ1.3	8mm Disk	METAL	
ADCPH-9700	φ1.3 MELF	8mm Disk	METAL	
ADCPH-9550	φ1.8	16mm Disk	METAL	
ADCPH-9560	φ2.5	16mm Disk	METAL	
ADCPH-9800	φ2.5 MELF	16mm Disk	METAL	
ADCPH-9570	φ3.75	16mm Disk	METAL	



I CP6

PART No.	NAME	SPECIFICATION	MATERIAL	REMARK
AWPH-9720	φ0.4	φ0.4 (12mm DISK)	METAL	TAPER SPECIAL METAL
AWPH-9514	φ0.7	φ0.7 (12mm DISK)	METAL	
AWPH-9524	φ1.0	φ1.0 (12mm DISK)	METAL	
AWPH-9534	φ1.3	φ1.3 (12mm DISK)	METAL	
AWPH-9554	φ1.8	φ1.8 (12mm DISK)	METAL	
AWPH-9563	φ2.5	φ2.5 (16mm DISK)	METAL	
AWPH-9572	φ3.75	φ3.75 (16mm DISK)	METAL	
AWPH-9583	φ2.5	φ2.5 (20mm DISK)	METAL	
AWPH-9602	φ3.75	φ3.75 (20mm DISK)	METAL	
AWPH-9612	φ5.0	φ5.0 (20mm SQ DISK)	METAL	



I CP4

PART No.	NAME	SPECIFICATION	MATERIAL	REMARK
AMPH-8710	φ0.7	φ0.7 (12mm DISK)	METAL	
AMPH-8720	φ1.0	φ1.0 (12mm DISK)	METAL	
AMPH-8730	φ1.3	φ1.3 (12mm DISK)	METAL	
AMPH-8740	φ1.8	φ1.8 (12mm DISK)	METAL	
AMPH-8750	φ2.5	φ2.5 (12mm DISK)	METAL	
	φ1.3	φ1.3 (25mm DISK)	METAL	
AMPH-8760	φ2.5	φ2.5 (25mm DISK)	METAL	
AMPH-8770	φ3.75	φ3.75 (25mm DISK)	METAL	
AMPH-8780	φ5.0	φ5.0 (25mm DISK)	METAL	





I XP142, XP143 (HEXAGON REFLECTOR)

PART No.	NAME	SPECIFICATION	MATERIAL	REMARK
ADNPN-8306	φ0.4	φ0.4/φ0.25	CERAMIC	
ADNPN-8310	φ0.7	φ0.7/φ0.38	CERAMIC	
ADNPN-8230	φ1.0	φ1.0/φ0.65	CERAMIC	
ADNPN-8240	φ1.3	φ1.3/φ0.9	CERAMIC	
ADNPN-8250	φ1.8	φ1.8/φ1.2	CERAMIC	
ADNPN-8260	φ2.5	φ2.5/φ2.0	CERAMIC	
ADNPN-8276	φ3.7	φ3.75/φ3.2	CERAMIC	



I XP242, XP243, XP341

PART No.	NAME	SPECIFICATION	MATERIAL	REMARK
ADEPN-8550	φ1.3	φ1.3/φ0.9	CERAMIC	
ADEPN-8560	φ1.8	φ1.8/φ1.2	CERAMIC	
DEPN-3060	φ2.5	φ2.5/φ2.0	CERAMIC	
DEPN-3070	φ3.7	φ3.75/φ3.2	CERAMIC	
DEPN-3080	φ5.0	φ5.0	METAL	
DEPN-3090	φ7.0	φ7.0	METAL	
DEPN-3100	φ10.0	φ10.0	PLASTIC	



I GL-II, GL-V

PART No.	NAME	SPECIFICATION	MATERIAL	REMARK
ANRG-2012	1D/1S	φ0.6/φ0.3	METAL	
ANRG-2021	1D/1S	φ0.7/φ0.4	METAL	
AHRG-0696	1D/1S	φ0.8/φ0.5	METAL	
AHRG-0700	1D/1S	φ0.9/φ0.6	METAL	
AHRG-1330	1D/1S	φ0.9/φ0.6	METAL	
AHRG-1350	1D/1S	φ1.0/φ0.7	METAL	
AJRG-0830	2D/1S	φ0.6/φ0.3 P=0.8	METAL	
AHRG-0679	2D/1S	φ0.7/φ0.4 P=1.3	METAL	
AHRG-0857	2D/2S	φ0.7/φ0.4 P=1.0	METAL	
AHRG-1320	2D/2S	φ0.8/φ0.5 P=1.0	METAL	



I XP 141

I QP242 INDEX NOZZLE

I QP242 SINGLE NOZZLE

I IP-3 SERIES

I RS-1/RS-1R (STANDARD TYPE)

PART No.	NAME	SPECIFICATION	MATERIAL	REMARK
40183420	7500	1.0×0.5/2-HOLE	METAL	1005
40183421	7501	0.7×0.4/φ0.25	METAL	0603
40183422	7502	φ0.7/φ0.4	METAL	1005
40183423	7503	φ1.0/φ0.6	METAL	1608-2012
40183424	7504	φ1.5/φ1.0	METAL	2012~3216
40183425	7505	φ3.5/φ1.7	PAD	AL capacitor(S)
40183426	7506	φ5.0/φ3.2	PAD	AL capacitor(M)
40183427	7507	φ8.5/φ5.0	PAD	AL capacitor(L)
40183428	7508	10×8/φ8.6×6.5	PAD	QFP80-144PIN
40183419	7509	0.4×0.2/φ0.1	CERAMIC	0402C/R



I RX7 (EXCLUSIVE TYPE)

PART No.	NAME	SPECIFICATION	MATERIAL	REMARK
HF0402R©	501	0.4×0.3/0.08(X)	CERAMIC	0402
HF0603R©	502	0.6×0.3/0.2 2HOLES	CERAMIC	0603
HF1005R©	503	1.0×0.5/0.4	CERAMIC	1005
HF1608R	512	1.6×0.8/0.7	CERAMIC	1608
HF3008R	521	3.0×0.8/1.6×0.4 (ELLIPTICAL HOLE)	CERAMIC	LED(SIDE VIEW)ETC
HF10071©	506	φ1.0/φ0.7	CERAMIC	1608~2012
HF12081	507	φ1.4/φ1.0	CERAMIC	3216
HF25201	508	φ2.5/φ2.0	CERAMIC	3mm~5mm
HF12081©	511	φ1.4/φ1.0	CERAMIC	2012~3216





I KE2050~2080/FX-1R, 3R

PART No.	NAME	SPECIFICATION	MATERIAL	REMARK
40011046	500	1.0×0.5/2-HOLE	METAL	1005
40001339	501	Φ0.7/Φ0.2	METAL	0603
40001340	502	Φ0.7/Φ0.35	METAL	1005
40001341	503	Φ1.0/Φ0.6	METAL	1608
40001342	504	Φ1.5/Φ1.0	METAL	2125
40001343	505	Φ3.5/Φ1.7	PAD	AL capacitor(S)
40001344	506	Φ5.0/Φ3.2	PAD	AL capacitor(M)
40001345	507	Φ8.5/Φ5.0	PAD	AL capacitor(L)
40001346	508	Φ9.5/Φ8.0	PAD	QFP80-144PIN
40025165	509	0.4×0.2/Φ0.15	CERAMIC	0402C/R



I KE2010~2040

PART No.	NAME	SPECIFICATION	MATERIAL	REMARK
E3608-729-0A0	500	1.0×0.5/2-HOLE	METAL	1005
E3600-729-0A0	501	Φ0.7/Φ0.2	METAL	0603
E3601-729-0A0	502	Φ0.7/Φ0.4	METAL	1005
E3602-729-0A0	503	Φ1.0/Φ0.6	METAL	1608
E3603-729-0A0	504	Φ1.5/Φ0.9	METAL	2125
E3604-729-0A0	505	Φ3.5/Φ1.7	PAD	AL capacitor(S)
E3605-729-0A0	506	Φ5.0/Φ3.2	PAD	AL capacitor(M)
E3606-729-0A0	507	Φ8.5/Φ5.0	PAD	AL capacitor(L)
E3607-729-0A0	508	Φ9.5/Φ8.0	PAD	QFP80-144PIN
JK2024510	510	Φ1.5	METAL	MELF
JK2024511	511	Φ2.0	METAL	MELF



I KE730~760

I KD770 DISPENSER

I KD775 DISPENSER

I F-130

PART No.	NAME	SPECIFICATION	MATERIAL	REMARK
A-1081-496-B	AF06021(F1)	Φ0.6/Φ0.25	CERAMIC	0603
A-1081-494-C	AF06042(F1)	Φ0.7/Φ0.4	CERAMIC	0603
A-1081-495-B	AF10071(F1)	Φ1.0/Φ0.7	CERAMIC	1005
A-1081-951-C	AF12082(F1)	Φ1.4/Φ0.9	CERAMIC	1608
A-1081-950-B	AF25200(F1)	Φ2.5/Φ2.0	METAL	2125
A-1081-952-B	AF40300(F1)	Φ4.0/Φ3.0	METAL	
A-1081-953-B	AF60400(F1)	Φ6.0/Φ4.0	METAL	



I E-1000

PART No.	NAME	SPECIFICATION	MATERIAL	REMARK
A-8417-333	AF05021	Φ0.45/Φ0.25	CERAMIC	0402
A-8417-334	AF06040	Φ0.6/Φ0.38	CERAMIC	0603
A-8417-336	AF08050	Φ0.8/Φ0.5	CERAMIC	1005
A-8417-337	AF10070	Φ0.9/Φ0.65	CERAMIC	1005, 1608
A-8417-339	AF12080	Φ1.3/Φ0.9	CERAMIC	1608
A-8417-340	AF25200	Φ2.5/Φ2.0	METAL	2125
A-8417-341	AF40300	Φ4.0/Φ3.0	METAL	
A-8417-342	AF60400	Φ6.0/Φ4.0	METAL	



I BF SERIES

I E-2000, SI-F209

I SS-H, SS-H2F





I YCM-7000, 7700, 8800

PART No.	NAME	SPECIFICATION	MATERIAL	REMARK
H03/H3M	H03/H3M	0.4×0.5/φ0.25	CERAMIC	0603
HS1/H1M	HS1/H1M	φ0.7/φ0.38	CERAMIC	1005
H2/H2M	H2/H2M	φ1.1/φ0.65	CERAMIC	1608
H06	H06	φ1.2/φ0.9	CERAMIC	
H7	H7	φ2.0/φ1.4	CERAMIC	3216
H07	H07	φ3.0/φ2.3	METAL	
H21	H21	φ0.8/φ0.45	CERAMIC	MELF
H22	H22	φ1.2/φ0.9	CERAMIC	MELF
H23	H23	φ2.0/φ1.4	CERAMIC	MELF
H24	H24	φ3.0/φ2.3	METAL	MELF
H31	H31	φ5.0/φ3.0	METAL	
H32	H32	φ6.0/φ4.0	METAL	
H33	H33	φ9.0/φ7.0	METAL	
H34	H34	φ11.0/φ9.0	METAL	
H35	H35	φ13.0/φ11.0	METAL	
H36	H36	φ18.0/φ16.0	METAL	
T7	T7	φ2.0/φ1.4	CERAMIC	
T07	T07	φ3.0/φ2.3	METAL	
T06	T06	φ1.6/φ1.0	CERAMIC	
T21	T21	φ0.8/φ0.45	CERAMIC	MELF
T22	T22	φ1.2/φ0.9	CERAMIC	MELF
T23	T23	φ2.1/φ1.4	CERAMIC	MELF
T24	T24	φ3.1/φ2.6	METAL	MELF
T31	T31	φ5.0/φ3.0	METAL	
T32	T32	φ6.0/φ4.0	METAL	
T33	T33	φ9.0/φ7.0	METAL	
T34	T34	φ11.0/φ9.0	METAL	
T35	T35	φ13.0/φ11.0	METAL	
T36	T36	φ18.0/φ16.0	METAL	



I YCM-3300, 3500

PART No.	NAME	SPECIFICATION	MATERIAL	REMARK
NP1	NP1	φ1.2/φ0.4		
NP2	NP2	φ1.2/φ0.6		
P2	P2	φ1.2/φ0.4	CERAMIC	
P7	P7	φ3.0/φ1.0		
04	04	φ0.8/φ0.5	CERAMIC	
05	05	φ1.2/φ0.9	CERAMIC	
06	06	φ1.6/φ1.2	CERAMIC	
07	07	φ3.0/φ2.3		
031	031	φ5.0/φ2.5		
032	032	φ7.0/φ4.0		

TCM-3000, 3000Z, 110J

PART No.	NAME	SPECIFICATION	MATERIAL	REMARK
	0603	Φ0.6/Φ0.3	CERAMIC	0603
	1005	Φ1.2/Φ0.65	CERAMIC	1005
630 052 9586	Z81	Φ0.6/Φ0.4	METAL	1005
630 052 9517	Z11	Φ0.9/Φ0.7	METAL	1608
630 052 9579	Z71	Φ1.3/Φ0.9	METAL	2125
630 052 9524	Z21	Φ1.8/Φ1.1	METAL	3216
630 052 9548	Z41	Φ3.0/Φ2.0	METAL	IC/S
630 052 9531	Z31	Φ6.0/Φ5.0	METAL	IC/L
630 052 9555	Z52	Φ1.3/Φ0.9	METAL	S MELF
630 052 9562	Z62	Φ2.5/Φ1.2	METAL	L MELF



TDM-3000 DISPENSER

PART No.	NAME	SPECIFICATION	MATERIAL	REMARK
630 071 6085	NS102	Φ0.7/Φ0.4 P=0.9	METAL	
630 068 1338	NM200	Φ0.8/Φ0.5 P=1.3	METAL	
630 093 9187	NM203	Φ0.8/Φ0.5 P=1.0	METAL	
630 074 7782	NM204	Φ0.9/Φ0.6 P=1.4	METAL	
630 068 1376	NL300	Φ1.3/Φ1.0 P=1.8	METAL	
630 070 9421	NL302	Φ1.3/Φ1.0 P=2.0	METAL	
630 067 5757	NP401	Φ1.3/Φ1.0 P=1.5	METAL	
630 069 0347	NP404	Φ0.8/Φ0.5 P=1.0	METAL	



TCM-1000 SERIES

TCM-822 SERIES

TCM-5000 SERIES

TDM-60 DISPENSER

TDM-1000 DISPENSER





I ASSEMBLEON AX301, AX501

PART No.	NAME	SPECIFICATION	MATERIAL	REMARK
9466 027 71011	CP L1		METAL	0402
9466 027 71081	CP L2		METAL	0603~1005
9466 027 71131	CP L3		METAL	1005~1608
9466 027 71171	CP L4		METAL	1608~3216
9466 027 71201	L5			1206~SO
9466 027 71251	L6		MELF	
9466 027 71301	L7			
9466 027 71351	L8			
9466 027 71551	V3			
9466 027 71601	V4			
9466 027 71651	V5			
9466 027 71701	V6			
9466 027 71751	V7			
9466 027 71801	V8			



I TOPAZ-XII, OPAL-XII (YV100X, YV180X)

PART No.	NAME	SPECIFICATION	MATERIAL	REMARK
	0603	0.35/0.65	CERAMIC	0603
KV8-M7710-A0X	71A	0.7×0.8(X)	CERAMIC	1005
KV8-M7720-A0X	72A	1.0×1.7(X)	CERAMIC	1608
KV8-M7730-A1X	73A	φ4.0/3.0×2.0	METAL	IC
KV8-M7740-A1X	74A	φ8.0	O-ring	SOP, QFP
KV8-M7760-A1X	76A	3.0×2.0	METAL	MELF
KV8-M77WL-A00	79A	φ1.2/φ0.7	CERAMIC	1608
KV8-M71U1-002	71F	0.7×0.8(X)	CERAMIC	1005
KV8-M71N2-A00	72F	1.0×1.7(X)	CERAMIC	1608
KV8-M71N3-A00	73F	φ4.0/3.0×2.0	METAL	IC
KV8-M7WL-A00	79F	φ1.2/φ0.7	CERAMIC	1608



I MG-3, MC-1, MC-12 (YS12, YS24, YG12, YG24)

I MG-1, MG-8 (YG100B, YG100R, YG88R)

I MG-2 (YG200, YG300)

I EMERALD-XII (YV88XG, YV88XF)

I TOPAZ, EMERALD (YV100II, YVL88)

I 5XX SERIES / TWIN HEAD

NOZZLE NO.	SPECIFICATION	MATERIAL	REMARK
516	6*3		
517	φ8		
518	φ12.5		
519	φ24		
513	φ6		
508	φ12.5(H=9.75mm)		



I 1XXX SERIES / CP20A/M

NOZZLE NO.	SPECIFICATION	MATERIAL	REMARK
1002	0.35*0.175	CERAMIC	0201
1010	0.35*0.175	CERAMIC	03015
1005	0.4*0.2	CERAMIC	0402
1008	0.47*0.3	CERAMIC	0402
1006	0.44*0.35	CERAMIC	0603
1009	0.6*0.35	CERAMIC	0603
1003	0.9*0.5	CERAMIC	1005
1001	1.4*0.9	CERAMIC	1005/1608
1007	1.4*0.66	CERAMIC	1005/1608
1011	1.5*0.9	VECTRA	1005/1608
1004	1.7*1.2	CERAMIC	1608/2012/3216
1014	1.7*1.2	VECTRA	1608/2012/3216
1133	2.2*1.6	TPU	3216/3225
1033	2.2*1.6	TPU	3225
1032	2.1*1.54	TPU	MELF
1034	2.9*1.65	TPU	MELF
1036	1.7*1.1	TPU	MELF
1042	1.76*1.2	CERAMIC	MELF
1044	1.725*1.2	CERAMIC	MELF
1046	1.54*1.1	CERAMIC	MELF



I 2XXX SERIES / CPP

NOZZLE NO.	SPECIFICATION	MATERIAL	REMARK
2005	0.4*0.2	CERAMIC	0402
2006	0.44*0.35	CERAMIC	0603
2003	0.9*0.5	CERAMIC	1005
2007	1.4*0.66	CERAMIC	1005/1608
2004	1.7*1.2(H=15mm)	CERAMIC	1608/2012/3216
2033	2.2*1.6	TPU	3216/3225
2032	2.1*1.54	TPU	MELF
2034	2.9*1.65	TPU	MELF
2036	1.7*1.1	TPU	MELF
2042	1.76*1.2	CERAMIC	MELF
2044	1.725*1.2	CERAMIC	MELF
2046	1.54*1.1	CERAMIC	MELF



I 4XXX/6XXX SERIES / CP20P/M2/P2

NOZZLE NO.	SPECIFICATION	MATERIAL	REMARK
4102/6102	0.35*0.175	CERAMIC	0201
4110/6110	0.35*0.175	CERAMIC	03015
4105/6105	0.4*0.2	CERAMIC	0402
4108/6108	0.47*0.3	CERAMIC	0402
4106/6106	0.44*0.35	CERAMIC	0603
4109/6109	0.6*0.35	CERAMIC	0603
4103/6103	0.9*0.5	CERAMIC	1005
4007/6007	1.4*0.66	CERAMIC	1005/1608
4004/6004	1.7*1.2	CERAMIC	1608/2012/3216
4133/6133	2.2*1.6(H=9.4mm)	TPU	3216/3225
4004/6004	1.7*1.2	CERAMIC	1608/2012/3216
4032/6032	2.1*1.54	TPU	MELF
4034/6034	2.9*1.65	TPU	MELF
4036/6036	1.7*1.1	TPU	MELF
4042/6042	1.76*1.2	CERAMIC	MELF
4044/6044	1.725*1.2	CERAMIC	MELF
4046/6046	1.54*1.1	CERAMIC	MELF



I HM520

PART No.	NAME	SPECIFICATION	MATERIAL	REMARK
AM03-030406A	HN007	0.23x0.23	CERAMIC	0201 LED
AM03-026485C	HN010	0.24x0.24	CERAMIC	0201 CHIP
AM03-026471C	HN015	0.30x0.20	CERAMIC	03015 CHIP
AM03-034565B	HN020	0.40x0.20	CERAMIC	0402 CHIP
AM03-033613B	HN030	0.48x0.30	CERAMIC	0603 CHIP
AM03-026555C	HN035	0.60x0.45	CERAMIC	0603, 1005 CHIP
AM03-026031C	HN040	1.00x0.50	CERAMIC	1005, 1608
AM03-026554C	HN045	1.00x0.60	CERAMIC	1005, 1608
AM03-026557C	HN065	1.60x1.00	CERAMIC	1608, 2012, 3216
AM03-026556C	HN080	2.00x1.20	CERAMIC	2012 CHIP
AM03-026559C	HN140	φ2.20/φ1.40	CERAMIC	2012, 3216, 3225R
AM03-026558C	HN220	φ3.60/φ2.20	CERAMIC	3225, 4532
AM03-034920B	HNL10	φ0.85/φ0.50	CERAMIC	1010 LED, 1012 LED
AM03-034921B	HNL15	1.40x1.40	CERAMIC	1515 LED
AM03-035390A	HNL20	2.00x2.00	CERAMIC	2020 LED, 2121 LED



I DECAN, SM SERIES, CP45-NEO

PART No.	NAME	SPECIFICATION	MATERIAL	REMARK
J9055153B	TN02S CN02S	0.7x0.4	CERAMIC	0603
J9055154B	TN03S CN03S	1.1x0.6	CERAMIC	1005
J90551006A	CN020	φ0.5/φ0.15	CERAMIC	0402
J9055133B	CN030	φ0.5/φ0.25	CERAMIC	0603
J9055134C	CN040	φ0.75/φ0.4	CERAMIC	1005
J9055136C	CN065	φ1.2/φ0.65	CERAMIC	1608
	CN080	φ1.5/φ0.9	CERAMIC	
	CN110S	φ2/φ1.2	CERAMIC	2012
J9055138B	CN140	φ2.2/φ1.4	CERAMIC	2125, 3216
J9055139B	CN220	φ3.6/φ2.2	METAL	3216
J9055258A	CN400	φ6.0/φ4.0	METAL	SOP, QFP
J9055218A	CN400N	φ6.0/φ4.0	METAL	SOP, QFP
J9055142B	CN750	φ9.0/φ7.5	METAL	SOP, QFP
J9055143B	CN1100	φ12.7/φ11.0	METAL	SOP, QFP



I EXCEN

PART No.	NAME	SPECIFICATION	MATERIAL	REMARK
AM03-000152A	VN020	0.4x0.2	CERAMIC	0402
AM03-000153A	VN030	0.5x0.3	CERAMIC	0603
AM03-000069A	VN035	0.6x0.45	CERAMIC	0603, 1005(근접 장착용)
AM03-000154A	VN040	1.0x0.5	CERAMIC	1005
AM03-000070A	VN045	1.0x0.5	CERAMIC	1005, 1608(근접 장착용)
AM03-000071A	VN065	φ1.2/φ0.65	CERAMIC	1608
	VN065S	1.6x1.0(◇)	CERAMIC	1608
AM03-007248A	VN080	2.0x1.2	CERAMIC	2012
AM03-000072A	VN140	φ2.2/φ1.4	CERAMIC	3216
AM03-000073A	VN220	φ3.6/φ2.2	METAL	3225~4532
AM03-000156A	VN400	φ6.2/φ4.0	METAL	SOIC8~
AM03-000074A	VN750	φ9.0/φ7.5	METAL	QFP48~
AM03-000075A	VN110	φ12.7/φ11.0	METAL	QFP80~
AM03-000155A	VN2202	φ3.6/φ2.2	METAL	3225, 4532
AM03-000076A	VN2205	φ3.6/φ2.2	METAL	3225, 4532
AM03-000077A	VN4005	φ6.2/φ4.0	METAL	SOIC8~
AM03-000157A	VN7505	φ9.0/φ7.5	METAL	QFP48~
AM03-000158A	VN1105	φ12.7/φ11.0	METAL	QFP80~
AM03-000159A	VN4002	φ6.2/φ4.0	METAL	SOIC8~
AM03-000160A	VN7502	φ9.0/φ7.5	METAL	QFP48~
AM03-000161A	VN1102	φ12.7/φ11.0	METAL	QFP80~



ENC-12SN, ENC-24SN(NOZZLE CLEANER)



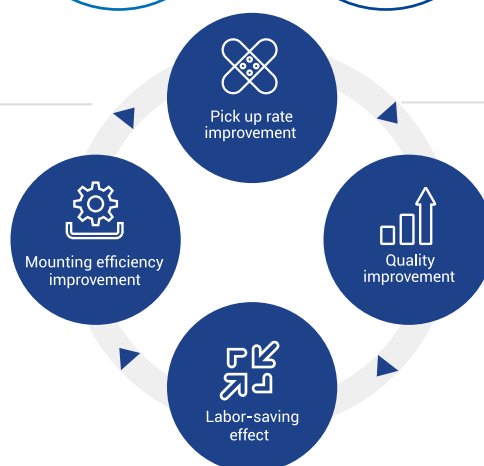
Nozzle Cleaner	Name	ENC-12SN	ENC-24SN
Nozzle head	Quantity	12	24
Compressed air	Type	clean air	clean air
	Pressure	7kgf/cm ²	7kgf/cm ²
Cleaning water	Type	distilled water	distilled water
	Cleaning fluid amount	4L	6L
Input power supply	Voltage	DC100~250V	DC100~250V
	Plug	3 PIN(with ground)	3 PIN(with ground)
	Cable length	1.6m	1.6m
	Power consumption	200W	200W
	Size	550(L) × 420(W) × 480(H)	
Weight	45kg		

Cleaning Process



Features of Nozzle Cleaner

- 蒸留水使用で炭素削減
- The effect of carbon reduction by using distilled water
- ノズル12/24本 同時洗浄
- Possible to clean 12/24 nozzle at the same time
- タッチパネル簡単操作
- Easy to operate with touch panel
- ノズルホルダー方式の簡単交換(交換時間短縮)
- Reduce the time to change the nozzle by using the nozzle holder



ENI-12AP, ENI-124AMP(NOZZLE INSPECTOR)

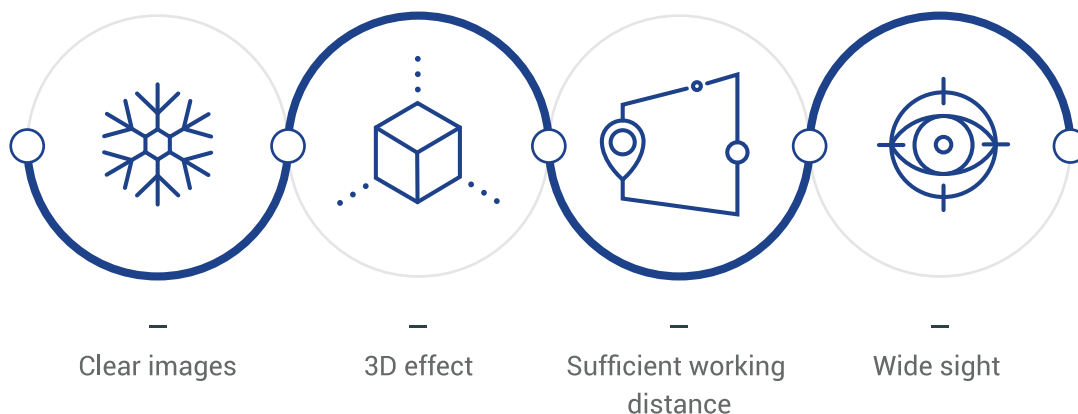


◦ ENI-12AP : 320(L)*320(W)*630(H), 14kg

◦ ENI-124AMP : 450(L)*400(W)*600(H), 19kg

特徴

- ・顕微鏡はシングルズームヘッド仕様で独特な光線凝集。
- ・鮮明な形状、立体感、十分な作業距離で広い視野の確保
- ・高鮮明度の彩色CCDとLCDモニター使用
- ・付属ソフトによるパソコンへの接続、検査画像保存、管理が簡単

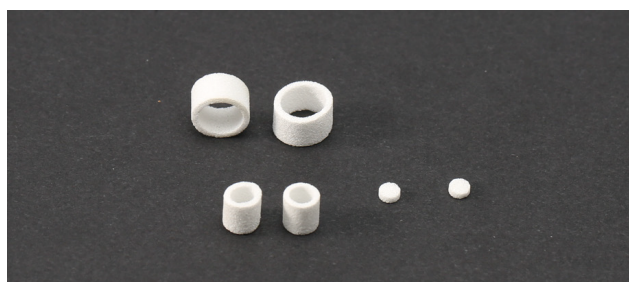
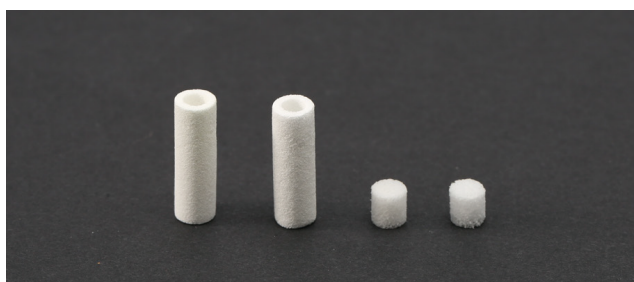
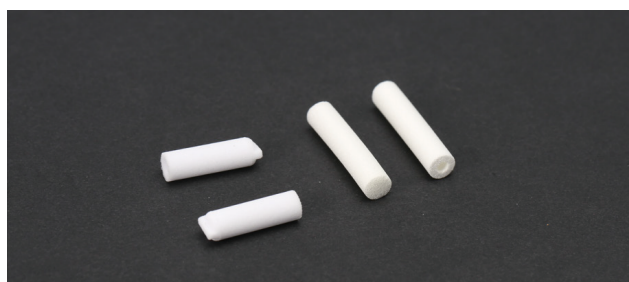


Nozzle Inspection System

NAME	ENI-12AP	ENI-124AMP
Dimension	Nozzle Inspection System	Nozzle Inspection System
Size	320(L) X 320(W) X 630(H)	450(L) X 400(W) X 600(H)
CCD Camera	1/3" sony	1/3" sony
Monitor	9 inch	9 inch
Optical Magnification	0.7X ~ 4.5X	0.7X ~ 4.5X
Working Distance	110mm	110mm
Maximum Magnification	Max 130 times	Max 130 times
Voltage	110V/60Hz or 220V/50Hz	110V/60Hz or 220V/50Hz
Weight	14kg	19kg
Image Store	Possible(PC)	Possible(PC)

ETC PARTS

FILTER



MAKER	MACHINE	PARTS NO.	REMARKS	
PANASONIC	CM602/402	N610071334AA	Holder Filter	
	NPM-8H/16H	N610009394AC		
	CM20F/DT401	N610009394AB	Nozzle Filter	
	NPM	N510054846AA		
	MSR	1046710117	Nozzle Filter	
	MV-SERIES		N421PTFBF	
			N421PTFB30	Hard Filter
			1042710035	
			1023710012	Nozzle Filter
		MSH2/3		
	MMC/MCF			
	MSF, BM	1080729975	Nozzle Filter	
FUJI	CP6	WPH-2030		
	CP7	DCPH-0630		
	NXT 4HEAD	XH00400		
	NXT 8HEAD	XH00800		
	NXT	XH00560		
	NXT	XH00940		
HANWHA(SAMSUNG)	SM471/481			
	SM320	J7458002A		
	CP45FV	H3022L		
	CP40LV	H3022T		
JUKI	KE2000-SERIES	E3052729000		
	KE2050-2080			
YAMAHA	YV100X	K46-M8527-C00		
	YS12/24			
HITACHI	GXH1/3, Σ-G4/G5			

ETC PARTS

I HEAD SHAFT & HOLDER



MAKER	MACHINE	REMARKS
PANASONIC	CM402-8H	Holder / Shaft
	CM602-12H	Holder / Shaft
	NPM-8H	Holder / Shaft
	NPM-16H	Holder / Shaft
YAMAHA	YV100X	Head / Shaft
	YV100II	Head / Shaft
	YS12/24	Head / Shaft
HANWHA (SAMSUNG)	CP40LV	Bell / Nozzle
	CP45FV	Bell / Nozzle
	SM-SERIES	Bell / Nozzle
JUKI	KE2050~2080	Head / Shaft

I CUTTER



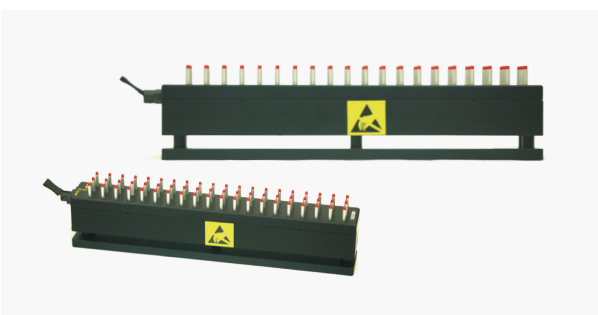
MAKER	MACHINE	REMARKS
PANASONIC	MSR	Moving / Fixed
	MV-SERIES	Moving / Fixed
	MSH2/3	Moving / Fixed
KME	CM88S-M	Moving / Fixed
	CM88C-M	Moving / Fixed
FUJI	CP743	Moving / Fixed
	CP732	Moving / Fixed
	CP6	Moving / Fixed
SANYO	TCM3000	Moving / Fixed

I BACK UP RUBBER BLOCK & MULTI-MANUAL BACK UP BLOCK



BACK UP RUBBER BLOCK

NAME	PART DESCRIPTION	REMARKS
BACK UP RUBBER	41*123*19	ESD HARD / SOFT
BACK UP RUBBER BLOCK	DATA for ON(SMT machine)	



MULTI-MANUAL BACK UP BLOCK

NAME	PART DESCRIPTION	REMARKS
MBU250	250mm(L)*42mm(W)*Min.52mm(H)	
MBU300	300mm(L)*42mm(W)*Min.52mm(H)	Stroke type
MBU350	350mm(L)*42mm(W)*Min.52mm(H)	

ETC PARTS

I JOINT TAPE



NAME	PART DESCRIPTION	REMARKS
JOINT TAPE	8mm Yellow	Box(500EA)
JOINT TAPE	12mm Yellow	Box(500EA)
JOINT TAPE	16mm Yellow	Box(500EA)
JOINT TAPE	24mm Yellow	Box(500EA)
JOINT TAPE	8mm Blue	Box(500EA)
JOINT TAPE	12mm Blue	Box(500EA)
JOINT TAPE	16mm Blue	Box(500EA)
JOINT TAPE	Others	

I SPLICE CLIP



NAME	PART DESCRIPTION	REMARKS
SPLICE CLIP	Copper multi	Box(4,000EA)
SPLICE CLIP	Copper piece	Box(4,000EA)

ETC PARTS

I SMT SQUEEGEE HOLDER & BLADE



NAME

MPM	SJ	PANASONIC
JUKI	DEK	YAMAHA
HANWHA(SAMSUNG)	HITACHI	ESE

I DEK BOARD CLAMP & BOM SQUEEGEE USC



DEK BOARD CLAMP (Standard)

NAME	PART DESCRIPTION
DEK PRINTER	Board Clamp 250mm
DEK PRINTER	Board Clamp 340mm
DEK PRINTER	Board Clamp 380mm
DEK PRINTER	Board Clamp 500mm



DEK BOARD CLAMP (Special)

NAME	PART DESCRIPTION
DEK PRINTER	Board Clamp 250mm
DEK PRINTER	Board Clamp 380mm
DEK PRINTER	Board Clamp 500mm

*Blade is fixed with bolting



BOM SQUEEGEE USC

NAME	PART DESCRIPTION
193199 BOM SQUEEGEE USC	300mm
193202 BOM SQUEEGEE USC	400mm
193205 BOM SQUEEGEE USC	520mm

 K-WORLD Co.,Inc

 有限会社ケー・ワールド

〒310-0845茨城県水戸市吉沢町365-13

TEL : 029-304-0177,FAX : 029-304-0180

URL : <http://www.kworld-jp.co.jp/>

E-mail : kworld_lee@bell.ocn.ne.jp

